

HK Children Happiness Index 2016

2016年香港兒童快樂指數

何樂生
珠海學院民意及民調中心主任

HO Lok Sang
Director, Public Opinion and Polling Centre
Chu Hai College of Higher Education

Commissioned by
Early Childhood Development Research Foundation
香港嬰幼兒發展研究基金會



Sept 27 2017

香 HONG
港 KONG



珠海學院
CHU HAI COLLEGE
OF HIGHER EDUCATION

Acknowledgements

- We thank the Shih Wing Ching Foundation(施永青基金) and the Wai Im Charitable Foundation(懷音慈善基金) for funding the research.
- The HK Early Childhood Development Research Foundation commissioned the project.
- We thank the schools that supported our research.
- We thank Mr Alan Chan, the Research Assistant, for very able support.

- We started contacting the schools in March, 2017. Questionnaires were sent to participating schools in November 2015, and received in April 2017 to June 2017.
 - 2017年4月至2017年6月間完成
- A total of 10 primary schools, and 9 secondary schools participated in the Survey. Direct subsidy schools excluded
 - 10所小學 + 9所中學參與；不含直資學校
- A total of 1636 student questionnaires (primary 780; secondary 856) were collected.
 - 1636學童參與

學童樣本組成

	Students	
	N	%
Primary小學		
P1	80	4.89%
P2	72	4.40%
P3	83	5.07%
P4	95	5.80%
P5	71	4.34%
P6	57	3.48%
P7	69	4.22%
P8	89	5.44%
P9	77	4.71%
P10	87	5.32%
Secondary中學		
S1	92	5.62%
S2	75	4.58%
S3	90	5.50%
S4	152	9.29%
S5	99	6.05%
S6	55	3.36%
S7	103	6.29%
S8	96	5.86%
S9	94	5.75%
Total	1636	100%

Summary of Findings Table: Happy and Unhappy Children whose Parents are Caring 父母關係、家庭財政情況、壓力與學童快樂關係密切

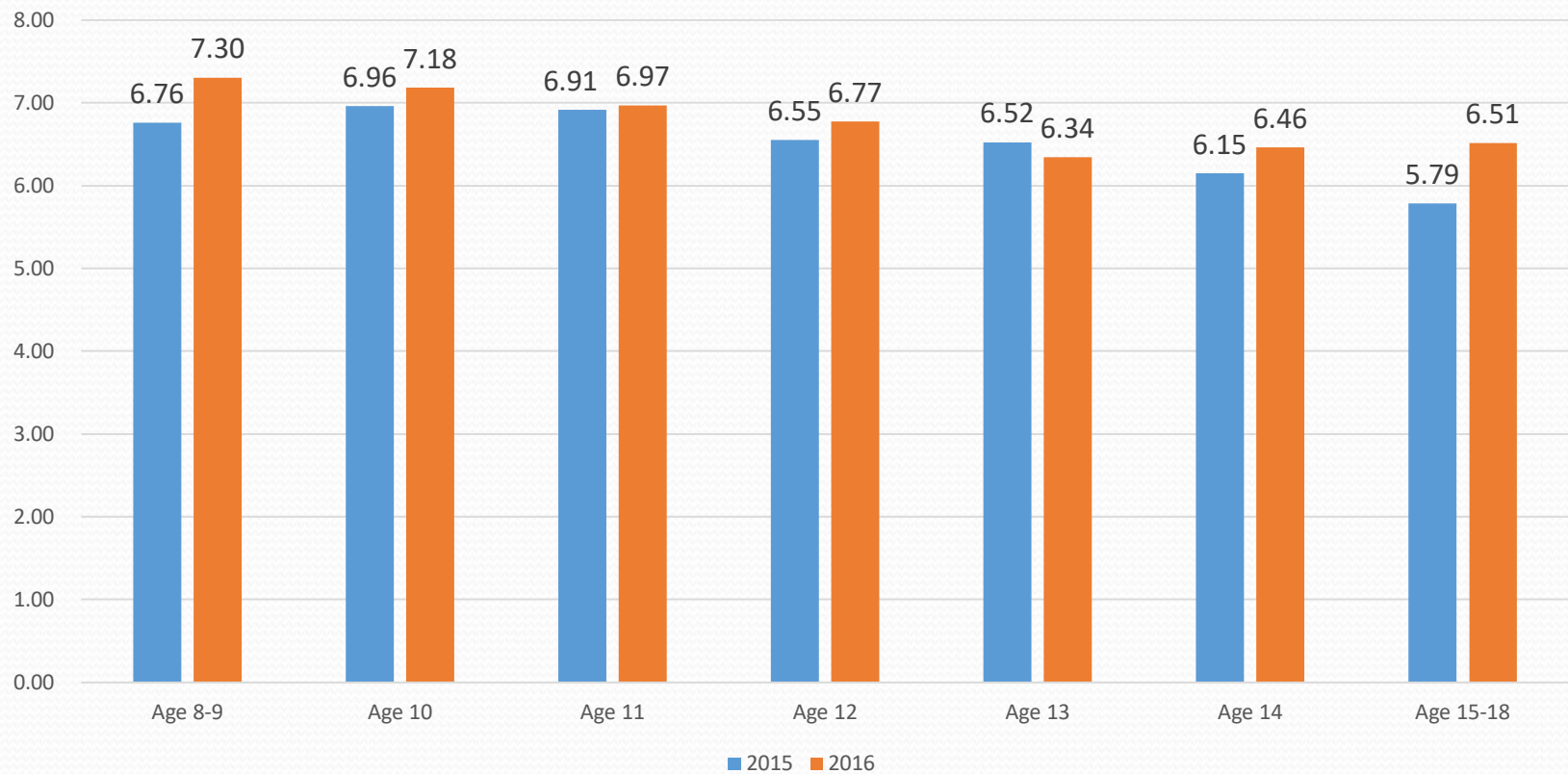
	Range	Happy children (happiness \geq 6) 快樂兒童			Unhappy children (happiness \leq 4) 不快樂兒童			t-test
		M	SD	N	M	SD	N	
Parents' relationships 雙親關係	1 - 5	4.15	1.19	1142	2.92	0.89	199	t(1339)=13.91, P=0.000
Children's pressure (academic)學業壓力	1 - 5	2.72	0.77	1160	3.44	0.83	201	t(1359)=11.44, P=0.000
Children's pressure (extra curricular)活動壓力	1 - 5	2.14	0.85	1158	2.66	1.06	200	t(1356)=6.54, P=0.000
Children's age 兒童年歲	8 - 18	12.08	1.86	1146	12.25	1.81	195	t(1339)=1.20, P=0.1148
Children's perception of financial wellbeing 財政狀況觀感	1 - 5	4.07	0.84	1144	3.28	1.15	195	t(1337)=9.19, P=0.000

2016/17主要指標較前兩年好

Survey parameters	Year	Happy children (Happiness \geq 6)	Unhappy children (Happiness \leq 4)	t-test
Parents' Relationships 雙親關係	2013	M = 4.11, N = 786	M = 3.23, N = 91	t(875) = 7.93; p = 0.000
	2014	M = 4.01, N = 784	M = 3.38, N = 154	t(936) = 6.49; p = 0.000
	2015	M = 4.07, N = 678	M = 3.04, N = 158	t(834) = 9.57; p = 0.000
	2016	M = 4.15, N = 1142	M = 2.92, N = 199	t(1339) = 13.91; p = 0.000
Children's pressures (academic) 學業壓力	2013	M = 2.68, N = 797	M = 3.44, N = 101	t(896) = 7.78; p = 0.000
	2014	M = 2.83, N = 807	M = 3.43, N = 167	t(972) = 8.26; p = 0.000
	2015	M = 2.86, N = 705	M = 3.65, N = 173	t(876) = 12.13; p = 0.000
	2016	M = 2.72, N = 1160	M = 3.44, N = 201	t(1359) = 11.44; p = 0.000
Children's pressures (activities) 活動壓力	2013	M = 2.04, N = 813	M = 2.61, N = 103	t(914) = 4.10; p = 0.000
	2014	M = 2.17, N = 807	M = 2.57, N = 169	t(971) = 4.50; p = 0.000
	2015	M = 2.20, N = 705	M = 2.66, N = 173	t(876) = 5.69; p = 0.000
	2016	M = 2.14, N = 1158	M = 2.66, N = 200	t(1339) = 6.54; p = 0.1148
Children's perception on financial wellbeing 家庭財政	2013	M = 4.01, N = 802	M = 3.25, N = 93	t(893) = -7.7; p = 0.000
	2014	M = 4.06, N = 801	M = 3.43, N = 164	t(963) = 6.97; p = 0.000
	2015	M = 4.03, N = 695	M = 3.31, N = 170	t(863) = 7.98; p = 0.000
	2016	M = 4.07, N = 1144	M = 3.28, N = 195	t(1337) = 9.19; P = 0.000
Happy Family Score 快樂家庭	2013	M = 4.17, N = 806	M = 3.10, N = 101	t(905) = 9.07; p = 0.000
	2014	M = 4.12, N = 774	M = 3.36, N = 151	t(923) = 8.20; p = 0.000
	2015	M = 4.15, N = 671	M = 3.04, N = 156	t(825) = 10.95; p = 0.000
	2016	M = 4.21, N = 1135	M = 2.96, N = 196	t(1329) = 14.84; p = 0.000

Comparison of Children's Happiness by Age in 2015 and 2016

2016年15-18歲少年快樂增幅最大
8-9歲學童快樂增幅也大



Happiness Scores since 2012; 按年齡組別的歷年快樂指數

Age	2016	2015	2014	2013	2012
8-9	7.30	6.76	7.25	7.82	7.94
10	7.18	6.96	6.94	7.75	6.96
11	6.97	6.91	6.9	7.44	7.31
12	6.77	6.55	6.93	7.33	6.93
13	6.34	6.52	6.45	7	6.37
14	6.46	6.15	6.55	6.67	6.55
15-18	6.51	5.79	5.83	6.58	6.33
Average	6.75	6.50	6.74	7.23	6.91

2016/17年少年快樂表現可喜

			2016/17年變化百分比
Age	2016	2015	2016 % increase
8-9	7.30	6.76	7.99
10	7.18	6.96	3.16
11	6.97	6.91	0.87
12	6.77	6.55	3.36
13	6.34	6.52	-2.76
14	6.46	6.15	5.04
15-18	6.51	5.79	12.44
Average	6.79	6.52	4.14

非常快樂學童比例隨年級下降；中三指數高於中二
 全港 2至5%學童非常不快樂；小四中二非常不快樂比例高

	小學4	小學5	小學6	中學1	中學2	中學3
Very unhappy (0-2)	14	8	13	6	17	8
Neutral (3-7)	110	133	132	160	93	180
Very happy (8-10)	134	116	115	104	203	71
Mean	7.24	6.94	6.84	6.76	6.33	6.45
% of very unhappy	5.43%	3.11%	5.00%	2.22%	5.43%	3.09%
% of very happy	51.94%	45.14%	44.23%	38.52%	29.71%	27.41%
Obs	258	257	260	270	313	259

2016年學童「雙壓」減少

School Work Pressure Distribution Percentages 學業壓力歷年變化

	2016	2015	2014	2013	2012
Low	21.06%	13.14%	15.5%	27.7%	20.3%
Middle	67.71%	69.30%	69.9%	54.1%	55.7%
High	11.23%	17.56%	14.6%	18.2%	24.0%

Extra-curricular Activities Pressure Distribution Percentages

課外活動壓力歷年變化

Low	54.10%	51.06%	53.2%	60.5%	57.2%
Middle	40.76%	42.70%	40.3%	27.4%	24.2%
High	5.14%	6.24%	6.5%	12.1%	18.6%

Mental Capital: 心理資本

The Key to Successful Living

- **Love 關愛**
 - 你會關心父母的健康和是否快樂
 - 你會選擇健康的生活方式
 - 你樂於為爸媽/監護人做些事情
 - 你樂於幫助有需要的人
- **Insight 智慧**
 - 接受別人批評並不難受
 - 做事不一定要優勝於別人，但要做最好的自己
 - 你在工作玩耍休息之間取得平衡
 - 你經常會反思，從錯誤中學習

● Fortitude堅毅

- 你有勇氣面對困難
- 當你決定要做一件事時，你不會輕易放棄

● Engagement行動

- 你會全心全意努力做好一些事情
- 你能在學習中尋找樂趣

愛智毅行均隨年級遞減：關愛

Dependent Variable: LOVE
Method: Least Squares
Date: 09/12/17 Time: 03:49
Sample: 1 1636
Included observations: 1562

Variable	Coefficient	Std. Error	t-Statistic	Prob.
C	8.238438	0.093376	88.22880	0.0000
GRADE	-0.221852	0.023551	-9.419967	0.0000
R-squared	0.053820	Mean dependent var	7.442782	
Adjusted R-squared	0.053214	S.D. dependent var	1.616938	
S.E. of regression	1.573328	Akaike info criterion	3.745542	
Sum squared resid	3861.561	Schwarz criterion	3.752397	
Log likelihood	-2923.269	Hannan-Quinn criter.	3.748091	
F-statistic	88.73577	Durbin-Watson stat	1.926238	
Prob(F-statistic)	0.000000			

愛智毅行均隨年級遞減：智毅

Dependent Variable: INSIGHTFORTITUDE

Method: Least Squares

Date: 09/12/17 Time: 03:50

Sample: 1 1636

Included observations: 1602

Variable	Coefficient	Std. Error	t-Statistic	Prob.
C	7.346540	0.097065	75.68688	0.0000
GRADE	-0.180513	0.024532	-7.358165	0.0000
R-squared	0.032732	Mean dependent var	6.700999	
Adjusted R-squared	0.032127	S.D. dependent var	1.689634	
S.E. of regression	1.662271	Akaike info criterion	3.855495	
Sum squared resid	4421.034	Schwarz criterion	3.862210	
Log likelihood	-3086.251	Hannan-Quinn criter.	3.857988	
F-statistic	54.14259	Durbin-Watson stat	1.812664	
Prob(F-statistic)	0.000000			

愛智毅行均隨年級遞減：行

Dependent Variable: ENGAGEMENT

Method: Least Squares

Date: 09/12/17 Time: 03:50

Sample: 1 1636

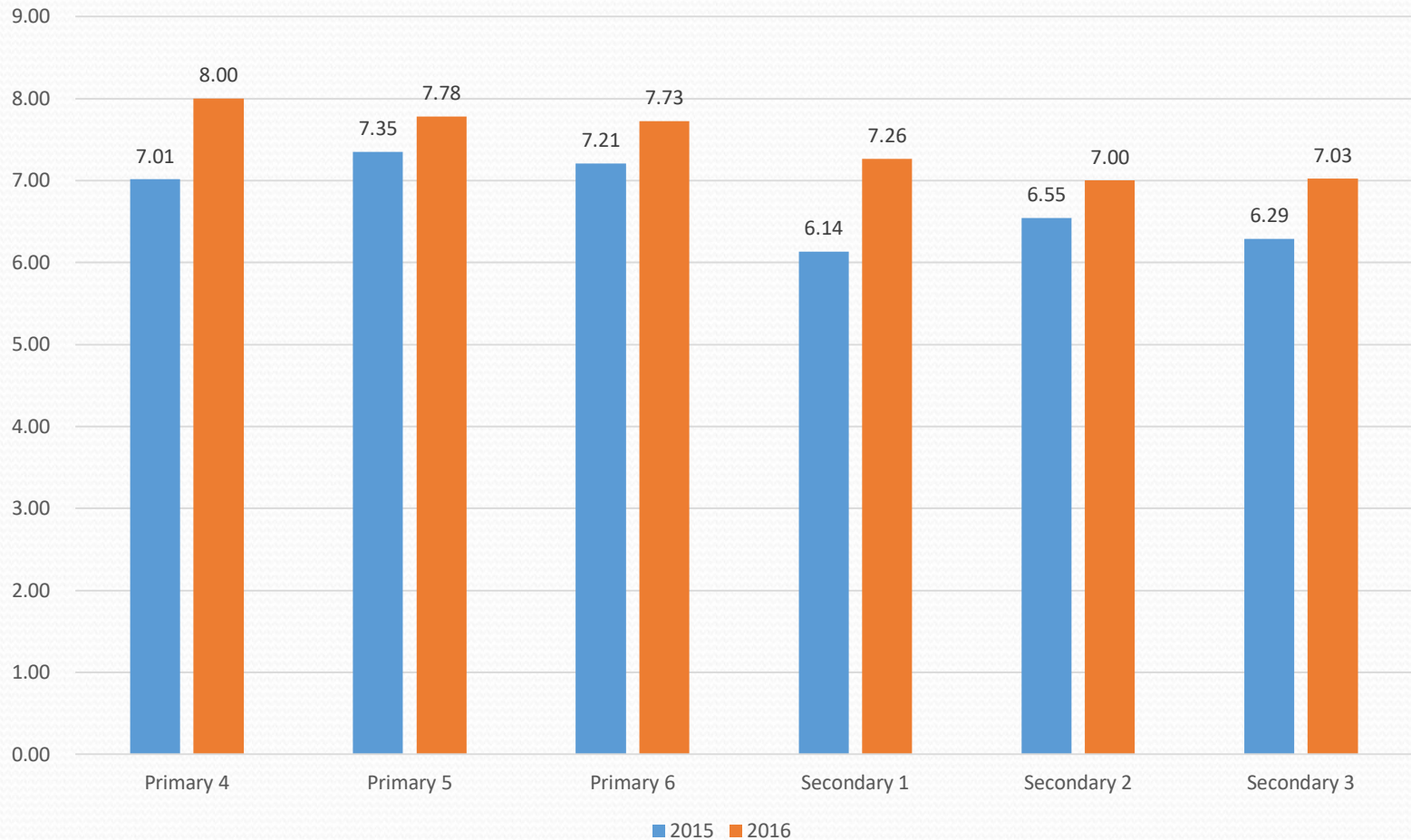
Included observations: 1612

Variable	Coefficient	Std. Error	t-Statistic	Prob.
C	7.650034	0.113991	67.11107	0.0000
GRADE	-0.217213	0.028884	-7.520084	0.0000

R-squared	0.033933	Mean dependent var	6.875775
Adjusted R-squared	0.033333	S.D. dependent var	1.997778
S.E. of regression	1.964199	Akaike info criterion	4.189286
Sum squared resid	6211.506	Schwarz criterion	4.195968
Log likelihood	-3374.565	Hannan-Quinn criter.	4.191766
F-statistic	56.55167	Durbin-Watson stat	1.823973
Prob(F-statistic)	0.000000		

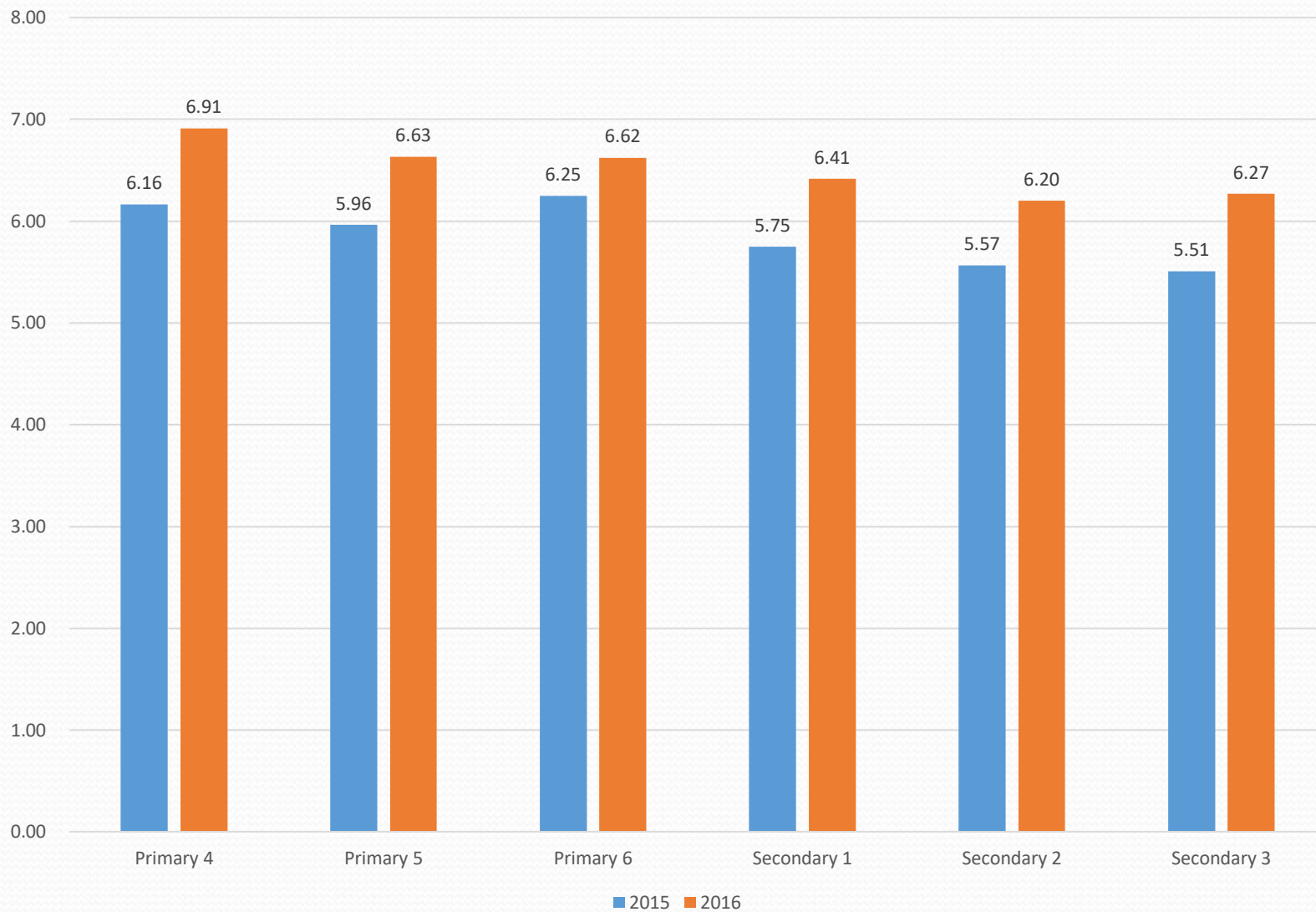
Comparison of Average Love Score by School Grade in 2015 & 2016

關愛指數全面大幅度上升;快樂指數隨年級下跌;中三穩下來



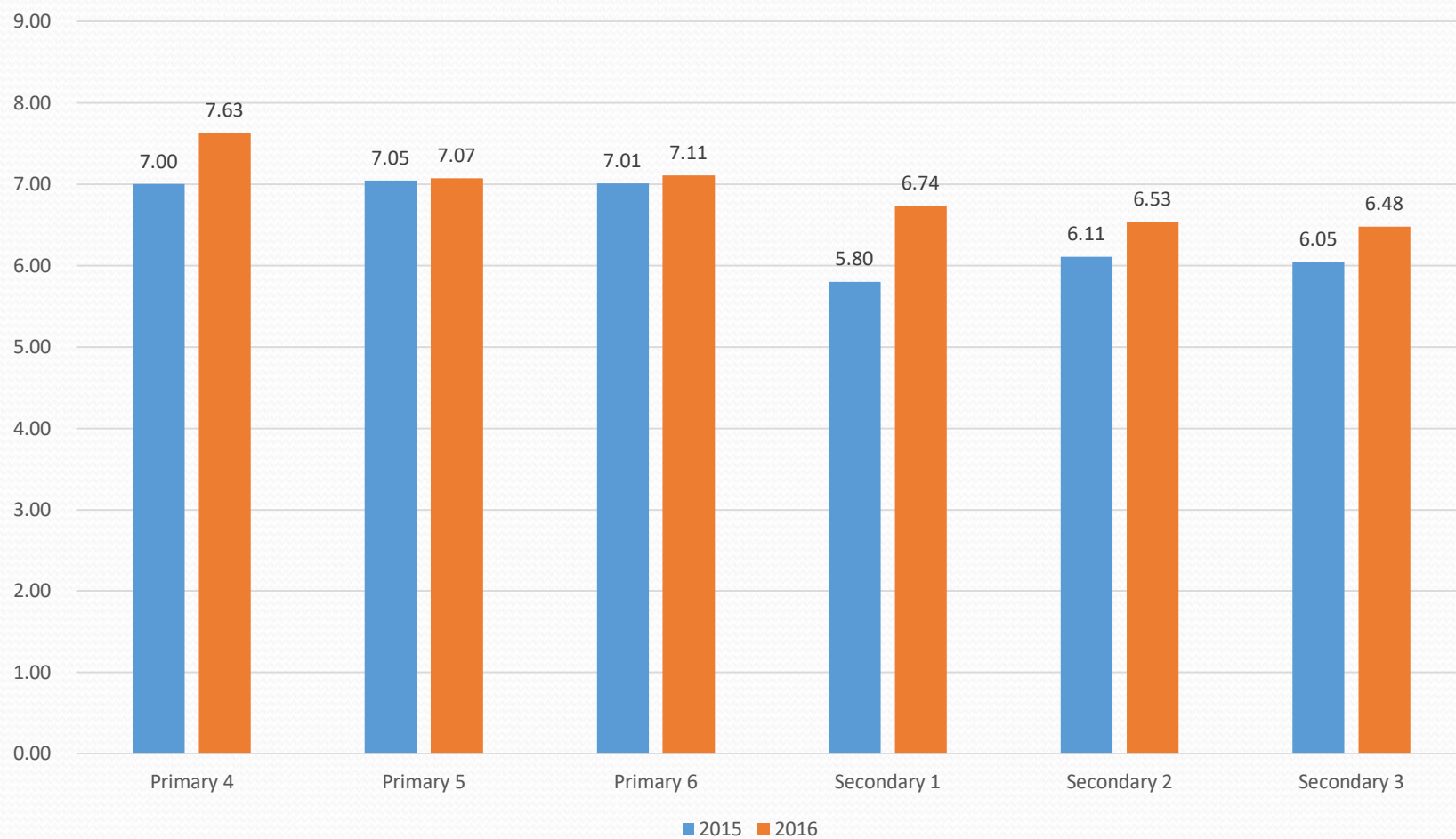
Comparison of Average Insight Score by School Grade in 2015 & 2016

智慧指數亦全面上升；中三穩下來



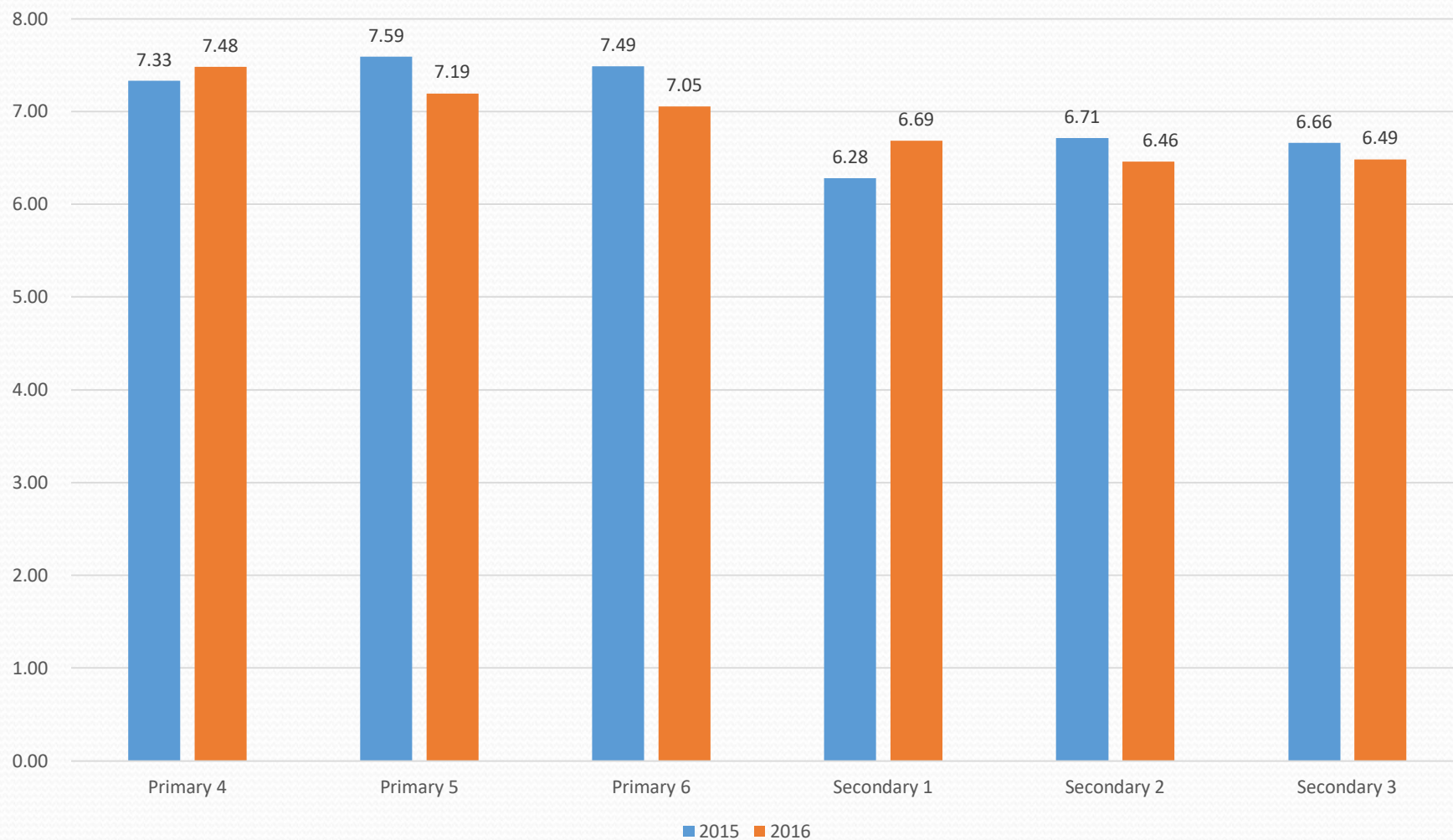
Comparison of Average Fortitude Score by School Grade in 2015 & 2016

堅毅指數全面溫和上升



Comparison of Average Engagement Score by School Grade in 2015 & 2016

行動指數有所回落；中三亦穩下來



基本模型；只看愛智毅行；關愛重中之重

Dependent Variable: HAPPINESS

Method: Least Squares

Date: 09/04/17 Time: 04:48

Sample (adjusted): 1 1635

Included observations: 1519 after adjustments

Variable	Coefficient	Std. Error	t-Statistic	Prob.
C	1.440545	0.229552	6.275460	0.0000
LOVE	0.407925	0.039067	10.44177	0.0000
INSIGHTFORTITUDE	0.176206	0.043596	4.041817	0.0001
ENGAGEMENT	0.159184	0.035342	4.504152	0.0000
R-squared	0.274110	Mean dependent var	6.753127	
Adjusted R-squared	0.272673	S.D. dependent var	2.149612	
S.E. of regression	1.833264	Akaike info criterion	4.052703	
Sum squared resid	5091.699	Schwarz criterion	4.066727	
Log likelihood	-3074.028	Hannan-Quinn criter.	4.057924	
F-statistic	190.6978	Durbin-Watson stat	1.974723	
Prob(F-statistic)	0.000000			

父母關心孩子表現或有反效果; 雙親關係十分重要; 男生較快樂

Dependent Variable: HAPPINESS

Method: Least Squares

Date: 09/12/17 Time: 03:36

Sample (adjusted): 2 1635

Included observations: 1419 after adjustments

Variable	Coefficient	Std. Error	t-Statistic	Prob.
C	3.008797	0.412799	7.288765	0.0000
LOVE	0.158346	0.043331	3.654319	0.0003
INSIGHTFORTITUDE	0.110503	0.042236	2.616332	0.0090
ENGAGEMENT	0.142274	0.034377	4.138624	0.0000
MALE	0.250714	0.090590	2.767558	0.0057
FINWELLOFF	0.223129	0.060377	3.695581	0.0002
PARENT_CARE	-0.272760	0.067587	-4.035712	0.0001
PARENTREL	0.599806	0.058565	10.24176	0.0000
SCHOOL_WORK	-0.324638	0.065278	-4.973196	0.0000
EXTRA_ACT	-0.212931	0.058628	-3.631880	0.0003
R-squared	0.374665	Mean dependent var	6.777308	
Adjusted R-squared	0.370671	S.D. dependent var	2.124747	
S.E. of regression	1.685568	Akaike info criterion	3.889104	
Sum squared resid	4003.164	Schwarz criterion	3.926156	
Log likelihood	-2749.319	Hannan-Quinn criter.	3.902946	
F-statistic	93.79910	Durbin-Watson stat	1.938549	
Prob(F-statistic)	0.000000			

餘暇十分重要；室外空間猶比室內空間重要

Dependent Variable: HAPPINESS

Method: Least Squares

Date: 09/12/17 Time: 03:49

Sample (adjusted): 1 1635

Included observations: 1578 after adjustments

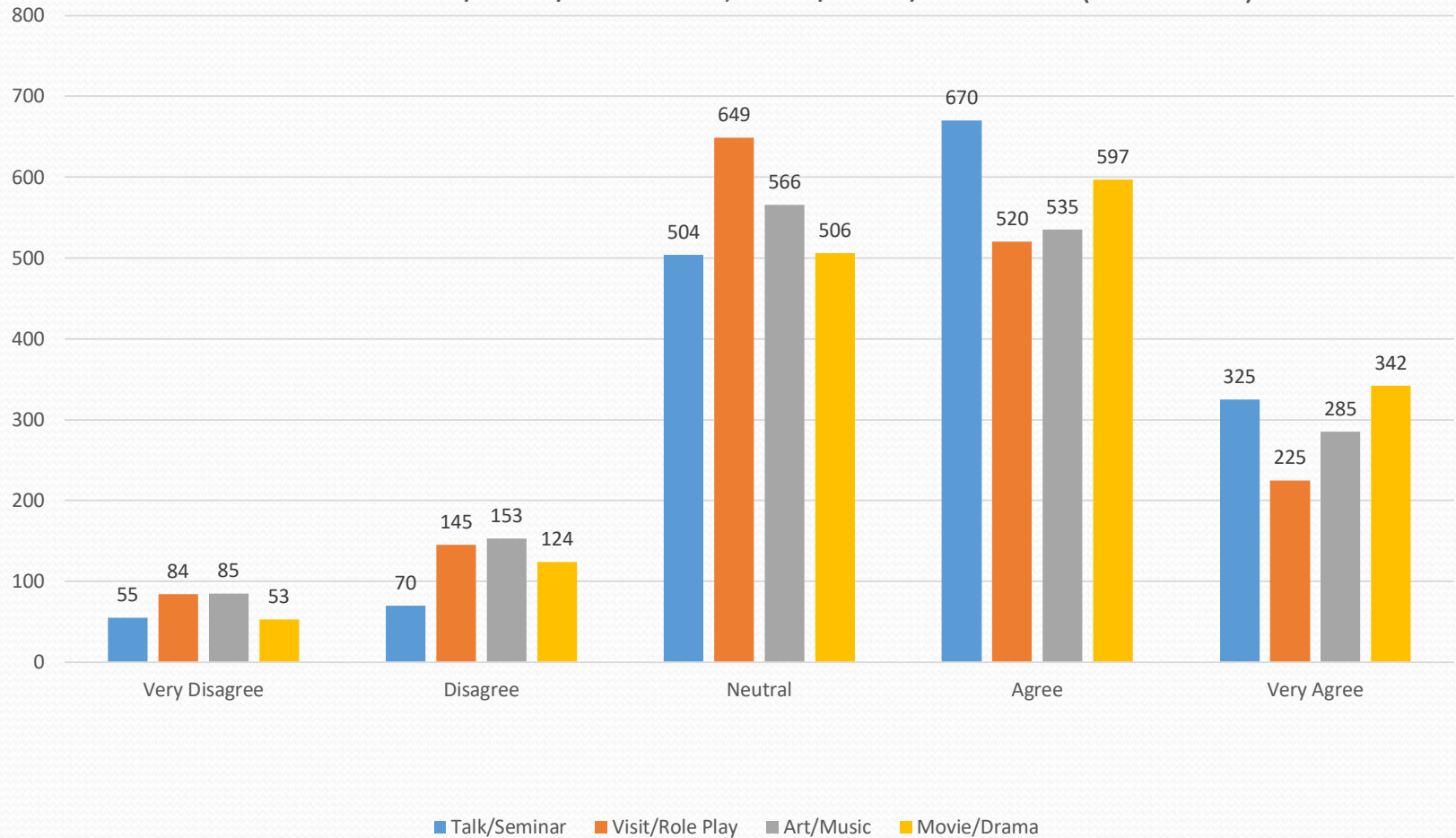
Variable	Coefficient	Std. Error	t-Statistic	Prob.
C	0.787528	0.242038	3.253733	0.0012
LIVING_SPACE	0.160983	0.060592	2.656855	0.0080
OPEN_SPACE	0.232483	0.061523	3.778817	0.0002
ABSENCE_NOISE	0.321909	0.056755	5.671890	0.0000
ACCESS_TRANSPORT	0.348881	0.055085	6.333454	0.0000
ENOUGH_FREETIME	0.514143	0.043329	11.86612	0.0000
R-squared	0.306066	Mean dependent var	6.742712	
Adjusted R-squared	0.303859	S.D. dependent var	2.171987	
S.E. of regression	1.812199	Akaike info criterion	4.030754	
Sum squared resid	5162.551	Schwarz criterion	4.051149	
Log likelihood	-3174.265	Hannan-Quinn criter.	4.038333	
F-statistic	138.6690	Durbin-Watson stat	1.890143	
Prob(F-statistic)	0.000000			

2015/16 年調查的一個重要結果：
認同學校有提供生命教育的同學更快樂

Life Education 學校提供生命教育	Frequency 人次	Happiness 平均快樂指數
Very much agree 十分認同	252	7.33
Agree 認同	453	6.70
Half half 一半半	314	5.94
Disagree 不認同	47	6.09
Very much disagree 非常不認同	23	3.91

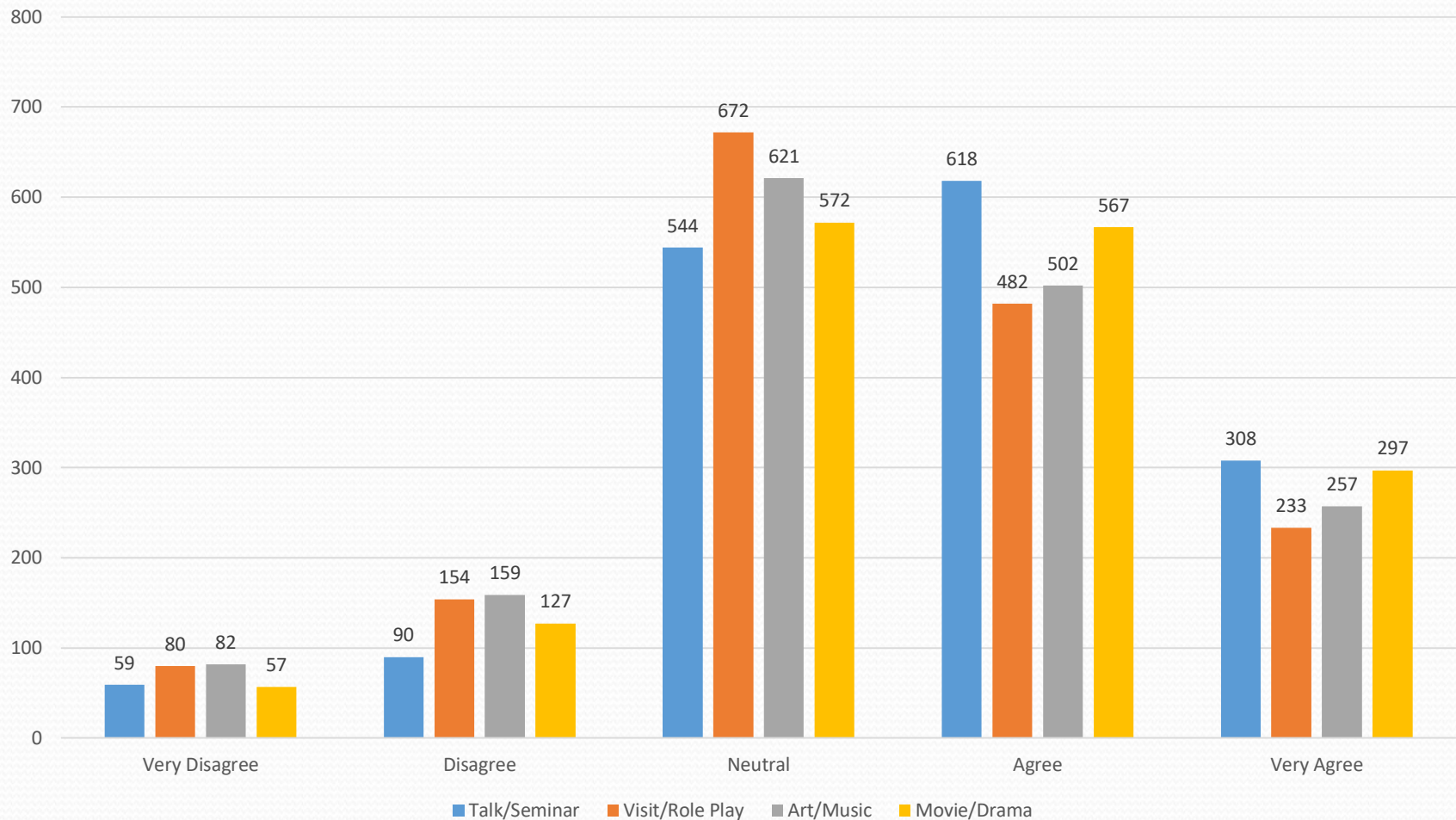
Do students agree that their schools have provided Love Education in the following ways

愛心教育以講座/話劇/電影為主; 探訪/藝術/唱歌為副(同學觀感)



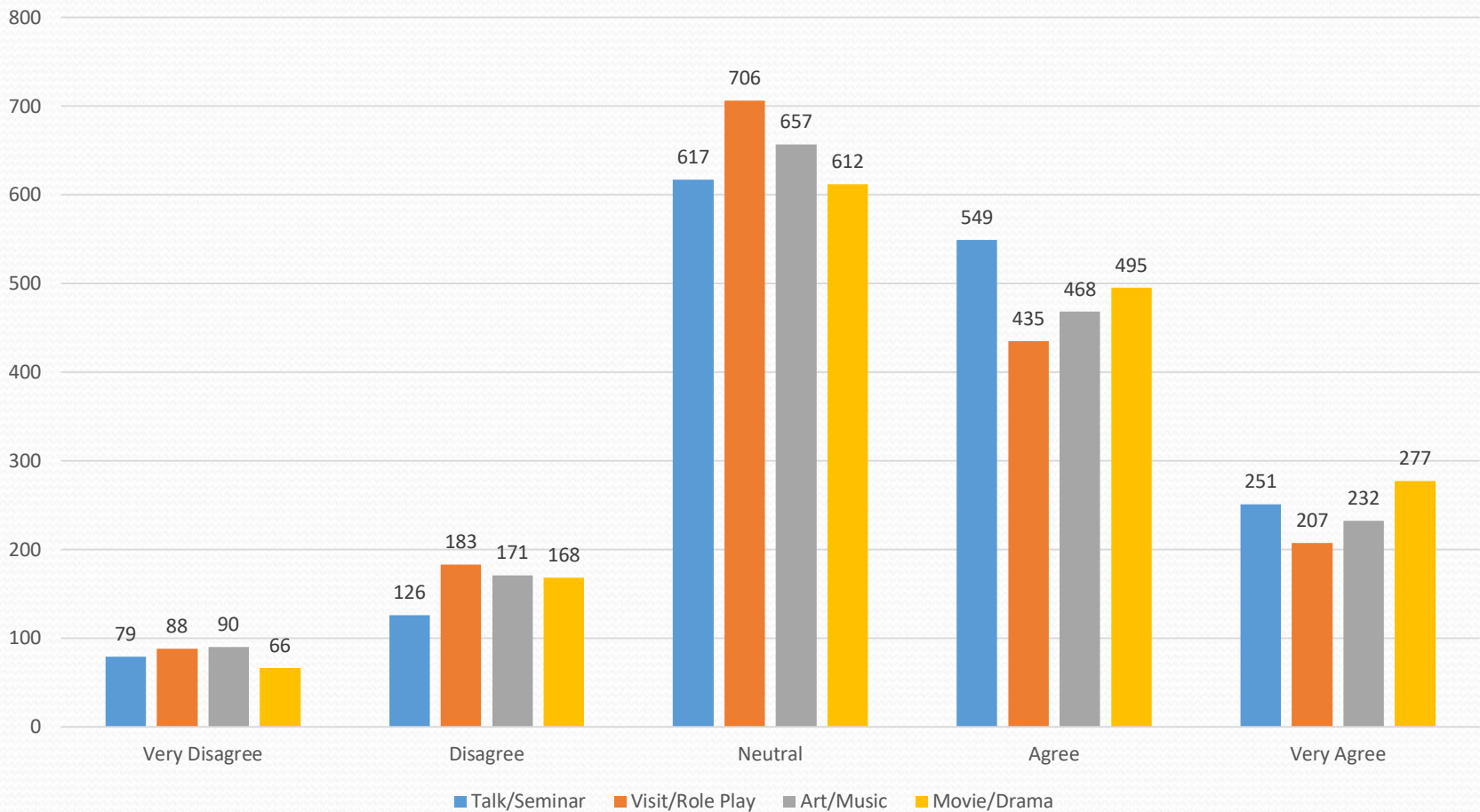
Do students agree that their schools have provided Insight Education in the following ways

智慧教育以講座/話劇/電影為主; 探訪/藝術/唱歌較少



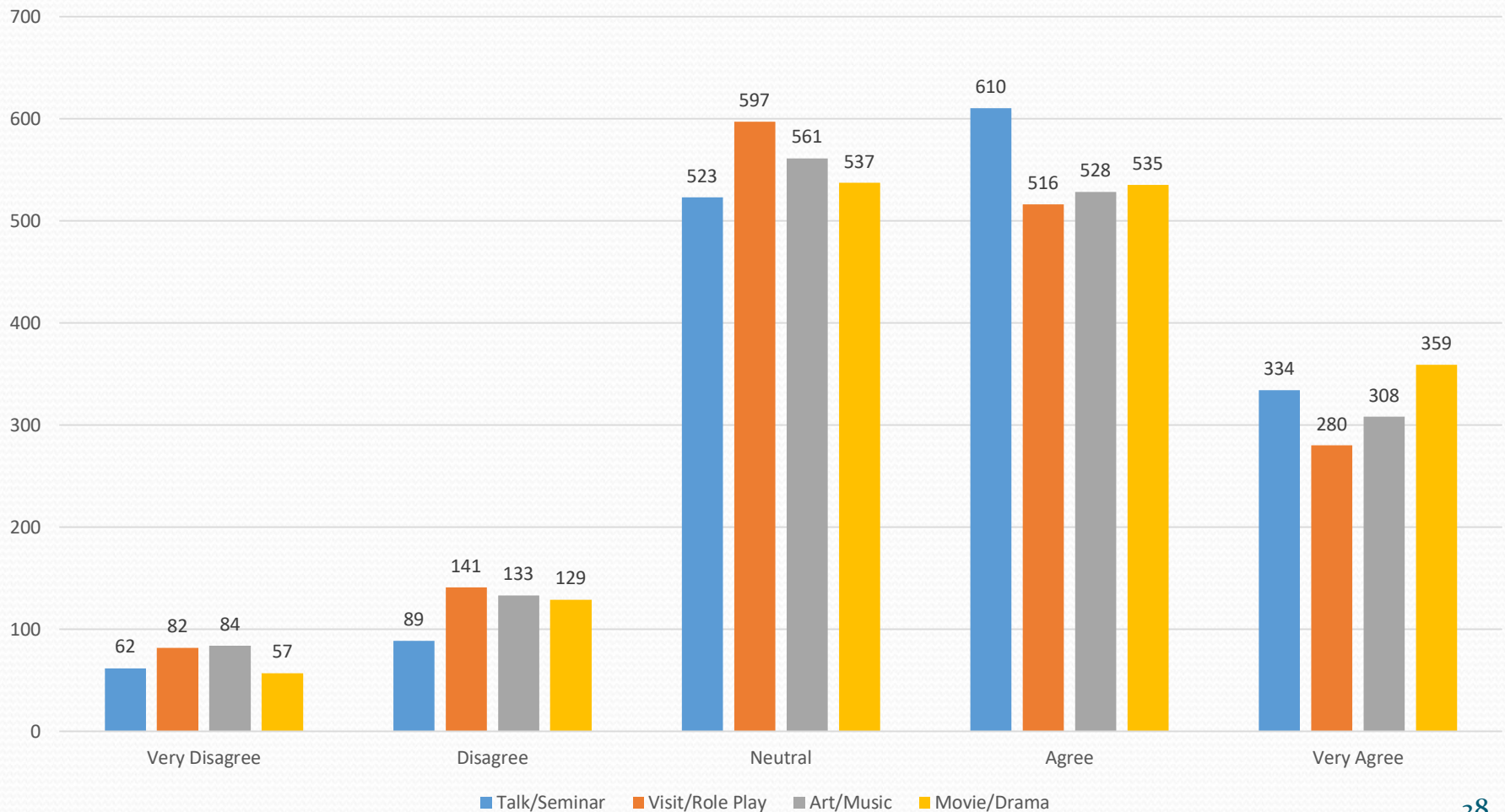
Do students agree that their schools have provided Fortitude Education in the following ways

堅毅教育以講座/話劇/電影為主; 探訪/藝術/唱歌較少



Do students agree that their schools have provided Engagement Education in the following ways

行動教育以講座/話劇/電影為主; 探訪/藝術/唱歌較少



生命教育以講座/話劇/電影為主; 探訪/藝術/唱歌較少

	講座 Talk	探訪 Visit	藝術/唱歌 Art	電影/話劇 Movies	總數 Total
Love關愛	995	745	820	939	3499
Insight智慧	926	715	759	864	3264
Fortitude堅毅	800	642	700	772	2914
Engagement 行動	944	796	836	894	3470
LIFE	3665	2898	3115	3469	

有關生命教育的主要問題

- 學校有透過以下，鼓勵尊重和珍惜生命(Love)
- 學校有透過以下，鼓勵減少攀比(Insight)
- 學校有透過以下，鼓勵奮發自強不怕困難(Fortitude)
- 學校有透過以下，鼓勵你尋找興趣發揮所長(Engagement)
- 生命教育深廣度比率=每校同學答同意或非常同意，有提供LIFE教育的百分比
- 學校快樂指數=學校三個級別快樂指數的平均數

學校快樂指數與生命教育深廣度比率關係密切 留意Adjusted R Square 達0.75

Dependent Variable: HAPPINESS

Method: Least Squares

Date: 09/12/17 Time: 12:13

Sample: 1 19

Included observations: 19

Variable	Coefficient	Std. Error	t-Statistic	Prob.
C	4.845775	0.265335	18.26287	0.0000
LIFE_PERCENT	3.747830	0.508062	7.376721	0.0000

R-squared	0.761958	Mean dependent var	6.760495
Adjusted R-squared	0.747956	S.D. dependent var	0.477912
S.E. of regression	0.239931	Akaike info criterion	0.082371
Sum squared resid	0.978638	Schwarz criterion	0.181786
Log likelihood	1.217473	Hannan-Quinn criter.	0.099196
F-statistic	54.41601	Durbin-Watson stat	1.677027
Prob(F-statistic)	0.000001		

愛心教育和建立目標最有助提升快樂

Dependent Variable: HAPPINESS

Method: Least Squares

Date: 09/04/17 Time: 15:51

Sample (adjusted): 1 1635

Included observations: 1581 after adjustments

Variable	Coefficient	Std. Error	t-Statistic	Prob.
C	2.927126	0.236857	12.35820	0.0000
LOVE_EDUCATION	0.656939	0.110593	5.940148	0.0000
INSIGHTFORTITUDE_EDU	0.141423	0.132347	1.068580	0.2854
ENGAGEMENT_EDUCATION	0.279608	0.098703	2.832821	0.0047

R-squared	0.147956	Mean dependent var	6.753953
Adjusted R-squared	0.146336	S.D. dependent var	2.175713
S.E. of regression	2.010227	Akaike info criterion	4.236900
Sum squared resid	6372.679	Schwarz criterion	4.250475
Log likelihood	-3345.269	Hannan-Quinn criter.	4.241944
F-statistic	91.28141	Durbin-Watson stat	1.979358
Prob(F-statistic)	0.000000		

愛心教育和建立目標效果似更顯著

Dependent Variable: HAPPINESS

Method: Least Squares

Date: 09/04/17 Time: 15:51

Sample (adjusted): 1 1635

Included observations: 1564 after adjustments

Variable	Coefficient	Std. Error	t-Statistic	Prob.
C	4.556893	0.621242	7.335128	0.0000
LOVE_EDUCATION	0.657259	0.111524	5.893425	0.0000
INSIGHTFORTITUDE_EDU	0.137599	0.132765	1.036411	0.3002
ENGAGEMENT_EDUCATION	0.268149	0.099016	2.708148	0.0068
AGE	-0.147023	0.053084	-2.769634	0.0057
AGE*SECONDARY	0.029667	0.014602	2.031739	0.0423
R-squared	0.150772	Mean dependent var		6.755115
Adjusted R-squared	0.148047	S.D. dependent var		2.174889
S.E. of regression	2.007451	Akaike info criterion		4.235437
Sum squared resid	6278.519	Schwarz criterion		4.255981
Log likelihood	-3306.112	Hannan-Quinn criter.		4.243074
F-statistic	55.32157	Durbin-Watson stat		1.983403
Prob(F-statistic)	0.000000			

生命教育以講座、訪問、電影、話劇效果為大；
以藝術和歌唱似乎較小

Dependent Variable: HAPPINESS

Method: Least Squares

Date: 08/22/17 Time: 12:38

Sample (adjusted): 1 1635

Included observations: 1581 after adjustments

Variable	Coefficient	Std. Error	t-Statistic	Prob.
C	2.894532	0.240967	12.01214	0.0000
LIFE_MOVIE_DRAMA	0.360870	0.102477	3.521485	0.0004
LIFE_SING_ART	0.009788	0.104427	0.093733	0.9253
LIFE_TALK	0.488030	0.084761	5.757726	0.0000
LIFE_VISIT_ROLEPLAY	0.226076	0.108691	2.079982	0.0377
R-squared	0.147562	Mean dependent var		6.753953
Adjusted R-squared	0.145399	S.D. dependent var		2.175713
S.E. of regression	2.011330	Akaike info criterion		4.238627
Sum squared resid	6375.628	Schwarz criterion		4.255597
Log likelihood	-3345.635	Hannan-Quinn criter.		4.244932
F-statistic	68.20380	Durbin-Watson stat		1.984144
Prob(F-statistic)	0.000000			

愛心教育以講座、訪問、電影、話劇效果為大；
以藝術和歌唱似乎較小

Dependent Variable: HAPPINESS

Method: Least Squares

Date: 08/30/17 Time: 15:55

Sample (adjusted): 1 1635

Included observations: 1602 after adjustments

Variable	Coefficient	Std. Error	t-Statistic	Prob.
C	3.038797	0.234804	12.94187	0.0000
LOVE_MOVIE_DRAMA	0.273943	0.070282	3.897762	0.0001
LOVE_SING_ART	0.117984	0.071400	1.652432	0.0986
LOVE_TALK	0.392471	0.064688	6.067138	0.0000
LOVE_VISIT_ROLEPLAY	0.247661	0.073445	3.372042	0.0008
R-squared	0.143447	Mean dependent var		6.749064
Adjusted R-squared	0.141302	S.D. dependent var		2.178356
S.E. of regression	2.018595	Akaike info criterion		4.245797
Sum squared resid	6507.340	Schwarz criterion		4.262586
Log likelihood	-3395.884	Hannan-Quinn criter.		4.252031
F-statistic	66.86238	Durbin-Watson stat		1.961709
Prob(F-statistic)	0.000000			

Dependent Variable: HAPPINESS

Method: Least Squares

Date: 09/04/17 Time: 15:49

Sample (adjusted): 1 1635

Included observations: 1592 after adjustments

Variable	Coefficient	Std. Error	t-Statistic	Prob.
C	3.391651	0.224324	15.11943	0.0000
INSIGHTFORTITUDE_MOVIE	0.299251	0.095716	3.126437	0.0018
INSIGHTFORTITUDE_SING	-0.024403	0.097435	-0.250457	0.8023
INSIGHTFORTITUDE_TALK	0.446835	0.079155	5.645064	0.0000
INSIGHTFORTITUDE_VISIT	0.239073	0.100804	2.371660	0.0178
R-squared	0.131608	Mean dependent var		6.751884
Adjusted R-squared	0.129419	S.D. dependent var		2.173637
S.E. of regression	2.028110	Akaike info criterion		4.255222
Sum squared resid	6527.697	Schwarz criterion		4.272096
Log likelihood	-3382.156	Hannan-Quinn criter.		4.261489
F-statistic	60.12899	Durbin-Watson stat		1.978932
Prob(F-statistic)	0.000000			

行動亦是以現身說法的講座和電影或話劇最有感染力

Dependent Variable: HAPPINESS
 Method: Least Squares
 Date: 08/30/17 Time: 16:02
 Sample (adjusted): 1 1635
 Included observations: 1595 after adjustments

Variable	Coefficient	Std. Error	t-Statistic	Prob.
C	3.766251	0.218900	17.20537	0.0000
ENGAGEMENT_MOVIE_DRAMA	0.288822	0.081539	3.542137	0.0004
ENGAGEMENT_SING_ART	0.102510	0.080822	1.268337	0.2049
ENGAGEMENT_TALK	0.311135	0.071193	4.370299	0.0000
ENGAGEMENT_VISIT_ROLEPLA	0.125670	0.081505	1.541869	0.1233
R-squared	0.111041	Mean dependent var		6.750470
Adjusted R-squared	0.108805	S.D. dependent var		2.178469
S.E. of regression	2.056543	Akaike info criterion		4.283060
Sum squared resid	6724.696	Schwarz criterion		4.299908
Log likelihood	-3410.740	Hannan-Quinn criter.		4.289317
F-statistic	49.65228	Durbin-Watson stat		1.978539
Prob(F-statistic)	0.000000			

電影和話劇對感性教育的功效巨大

Dependent Variable: HAPPINESS

Method: Least Squares

Date: 09/04/17 Time: 15:48

Sample (adjusted): 1 1635

Included observations: 1588 after adjustments

Variable	Coefficient	Std. Error	t-Statistic	Prob.
C	3.731520	0.216669	17.22223	0.0000
LOVE_MOVIE_DRAMA	0.296582	0.076024	3.901151	0.0001
INSIGHTFORTITUDE_MOVIE	0.282994	0.096448	2.934150	0.0034
ENGAGEMENT_MOVIE_DRAMA	0.260175	0.076169	3.415777	0.0007

R-squared	0.115187	Mean dependent var	6.753149
Adjusted R-squared	0.113511	S.D. dependent var	2.173512
S.E. of regression	2.046438	Akaike info criterion	4.272594
Sum squared resid	6633.648	Schwarz criterion	4.286121
Log likelihood	-3388.440	Hannan-Quinn criter.	4.277619
F-statistic	68.73645	Durbin-Watson stat	1.955541
Prob(F-statistic)	0.000000		

歌唱和藝術對啟發愛心較啟發智慧和行動有效

Dependent Variable: HAPPINESS

Method: Least Squares

Date: 09/04/17 Time: 15:27

Sample (adjusted): 1 1635

Included observations: 1590 after adjustments

Variable	Coefficient	Std. Error	t-Statistic	Prob.
C	4.194095	0.203125	20.64784	0.0000
LOVE_SING_ART	0.315003	0.077153	4.082816	0.0000
INSIGHTFORTITUDE_SING	0.168115	0.097992	1.715601	0.0864
ENGAGEMENT_SING_ART	0.252510	0.075974	3.323645	0.0009
R-squared	0.097506	Mean dependent var		6.751572
Adjusted R-squared	0.095799	S.D. dependent var		2.179323
S.E. of regression	2.072307	Akaike info criterion		4.297715
Sum squared resid	6811.008	Schwarz criterion		4.311228
Log likelihood	-3412.683	Hannan-Quinn criter.		4.302734
F-statistic	57.11732	Durbin-Watson stat		1.945984
Prob(F-statistic)	0.000000			

Dependent Variable: HAPPINESS

Method: Least Squares

Date: 09/04/17 Time: 15:25

Sample (adjusted): 1 1635

Included observations: 1593 after adjustments

Variable	Coefficient	Std. Error	t-Statistic	Prob.
C	3.488157	0.228344	15.27585	0.0000
LOVE_TALK	0.322381	0.081769	3.942588	0.0001
INSIGHTFORTITUDE_TALK	0.400668	0.100558	3.984452	0.0001
ENGAGEMENT_TALK	0.174575	0.077727	2.245998	0.0248

R-squared	0.120122	Mean dependent var	6.748274
Adjusted R-squared	0.118460	S.D. dependent var	2.178016
S.E. of regression	2.044947	Akaike info criterion	4.271129
Sum squared resid	6644.893	Schwarz criterion	4.284621
Log likelihood	-3397.954	Hannan-Quinn criter.	4.276140
F-statistic	72.31045	Durbin-Watson stat	1.952082
Prob(F-statistic)	0.000000		

訪問和角色扮演對愛心教育成效高

Dependent Variable: HAPPINESS

Method: Least Squares

Date: 09/04/17 Time: 15:24

Sample (adjusted): 1 1635

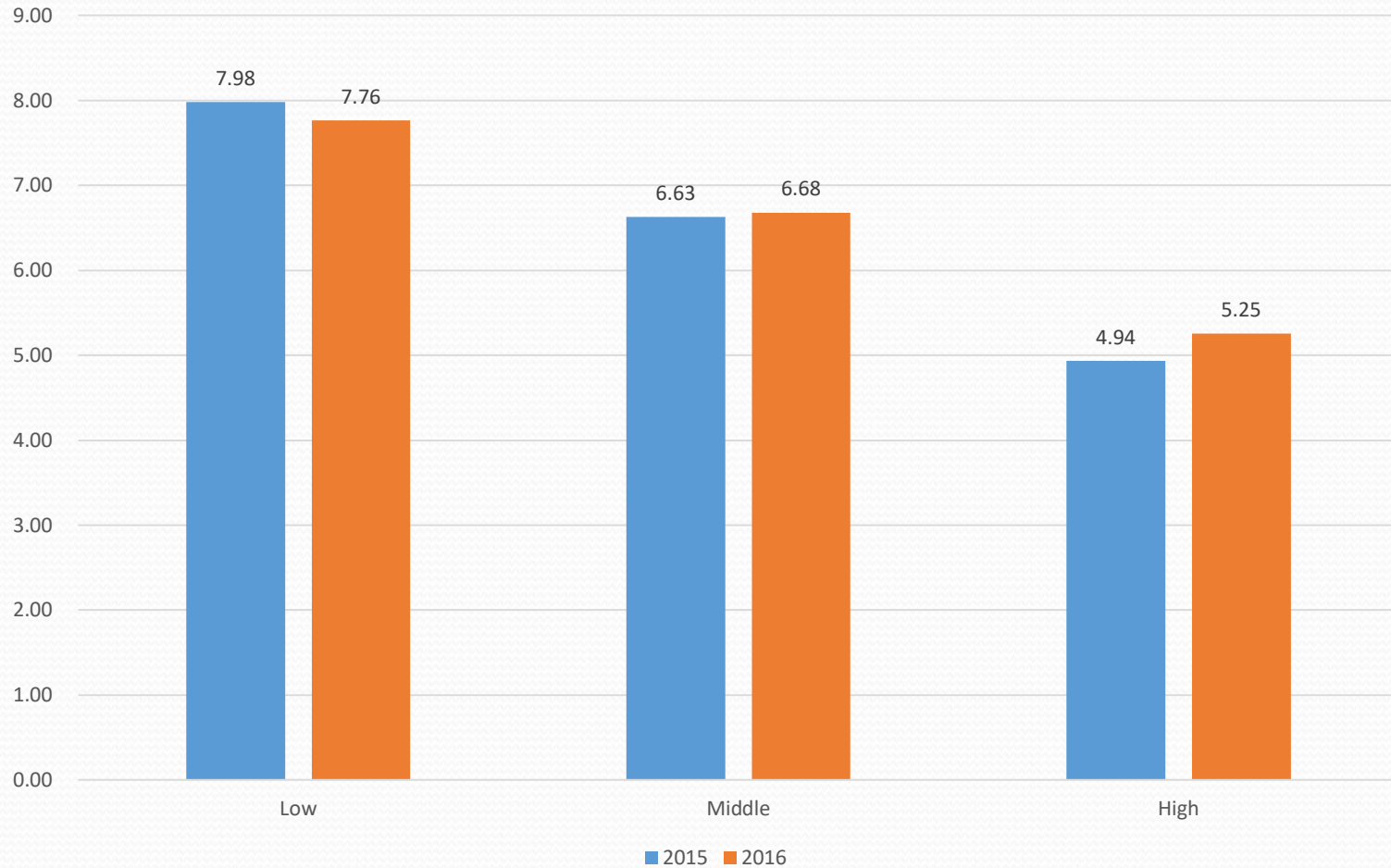
Included observations: 1591 after adjustments

Variable	Coefficient	Std. Error	t-Statistic	Prob.
C	3.923491	0.203892	19.24295	0.0000
LOVE_VISIT_ROLEPLAY	0.365458	0.079075	4.621654	0.0000
INSIGHTFORTITUDE_VISIT	0.286903	0.101986	2.813160	0.0050
ENGAGEMENT_VISIT_ROLEPLA	0.178310	0.077037	2.314595	0.0208

R-squared	0.115354	Mean dependent var	6.750471
Adjusted R-squared	0.113682	S.D. dependent var	2.178791
S.E. of regression	2.051211	Akaike info criterion	4.277249
Sum squared resid	6677.251	Schwarz criterion	4.290755
Log likelihood	-3398.552	Hannan-Quinn criter.	4.282266
F-statistic	68.97941	Durbin-Watson stat	1.960476
Prob(F-statistic)	0.000000		

Comparison of Happiness Score falls with school work pressures in 2015 & 2016

學業壓力愈低愈快樂



Comparison of Happiness Score falls with extra-curricular activities pressures in 2015 & 2016

活動壓力愈低愈快樂

